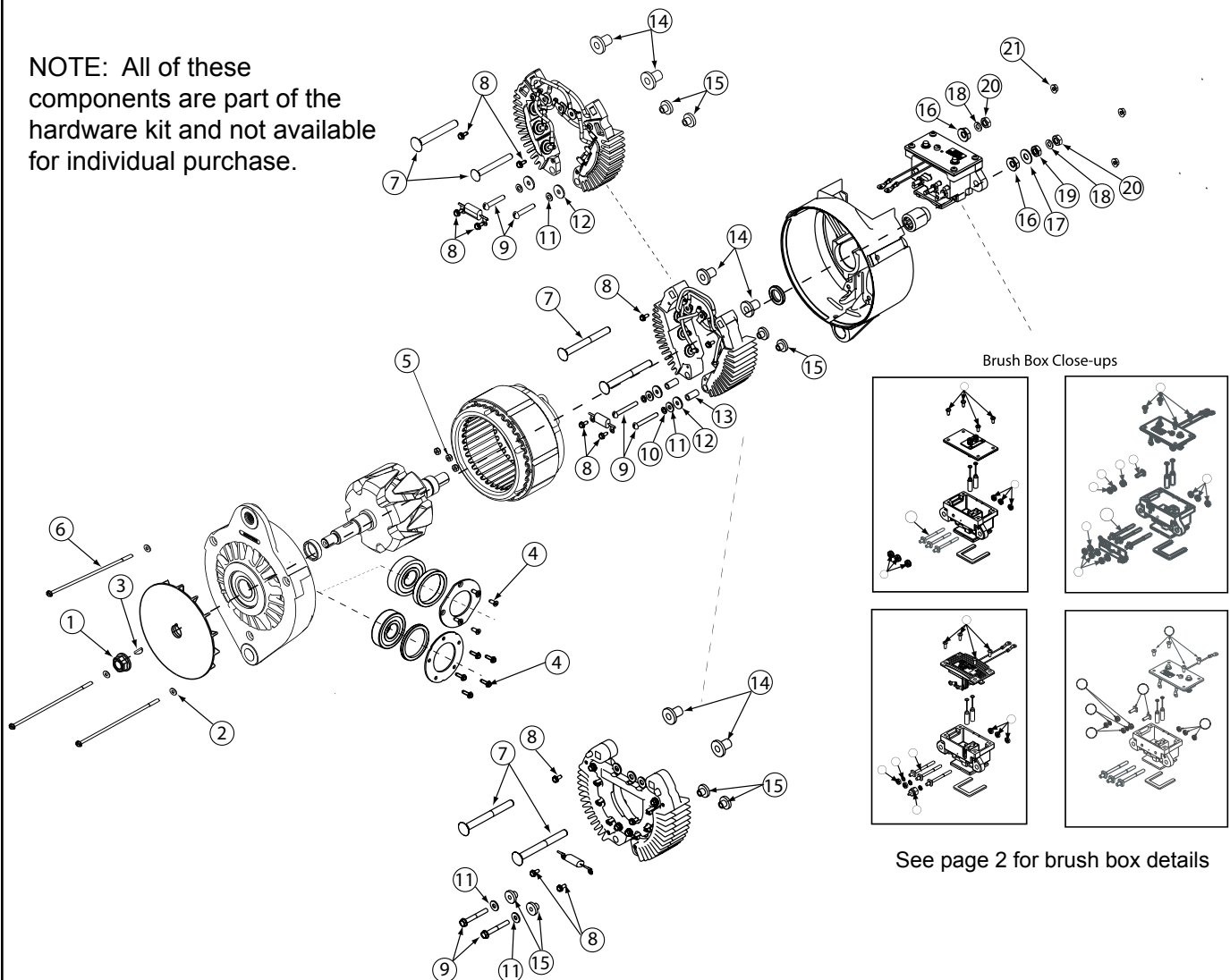


Source:	Leece-Neville Heavy Duty Systems Division - Arcade, NY USA
Date:	JULY 7, 2017
Bulletin No:	TSB-3009
Models:	2500 and 2800 Series
Subject:	Hardware Kit for series 2500 and 2800 alternators K212104780S

2500, 2800 Series J-180 Mount

NOTE: All of these components are part of the hardware kit and not available for individual purchase.

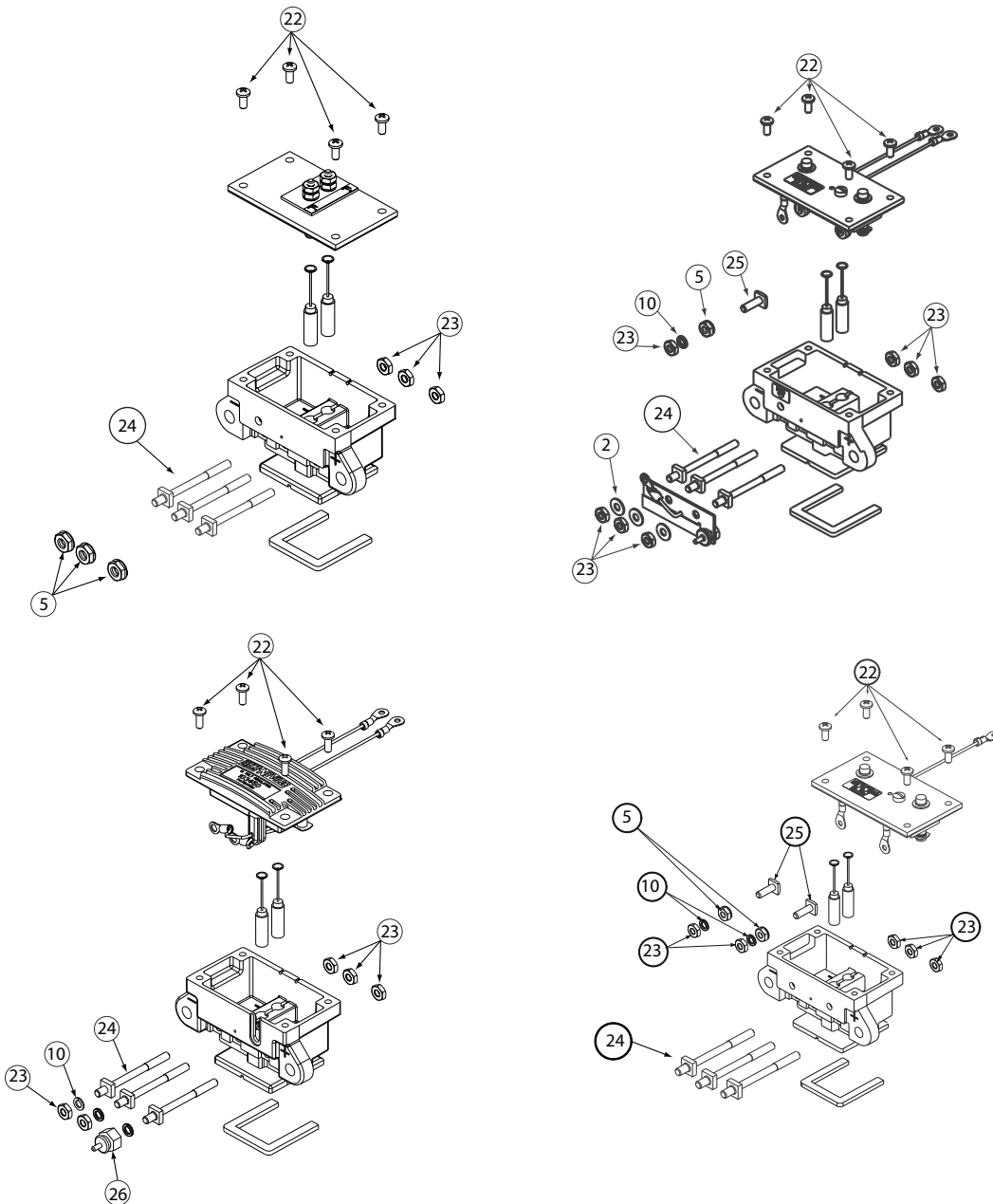


Important: The information contained in this bulletin is intended for use by trained, professional technicians who have the proper tools, equipment, and training to perform the required maintenance described above. This information is NOT intended for 'do-it-yourselfers,' and you should not assume that this information applies to your equipment. If you have any questions regarding this information please visit our website at www.prestolite.com, or contact our technical service department at:

Date: JULY 7, 2017

Bulletin No: TSB-3009

Note: All of these components are part of the hardware kit and not available for individual purchase.



Important: The information contained in this bulletin is intended for use by trained, professional technicians who have the proper tools, equipment, and training to perform the required maintenance described above. This information is NOT intended for 'do-it-yourselfers', and you should not assume that this information applies to your equipment. If you have any questions regarding this information please visit our website at www.prestolite.com, or contact our technical service department at:

Date: JULY 7, 2017

Bulletin No: TSB-3009

Description	Qty.	Key	Where used
NUT, 5/8-18, LOCK	1	1	Fan Nut
WASHER, FLAT#10	6	2	Thru-Bolt flat washer
KEY, WOODRUFF #8	1	3	Shaft key
SCREW, THREAD FORMING	4	4	Front housing retainer plate holding screw
SCREW TRHEAD FORMING	5	4	Front housing retainer plate holding screw
NUT	6	5	Internal stator nuts to AC-taps
THROUGH BOLT	3	6	Thru-Bolt Hold Alternator Together
SCREW TERMINAL 1/4-20	1	7	Positive or Negative Output Studs
SCREW TERMINAL 1/4-20	1	7	Positive or Negative Output Studs
SCREW TERMINAL 1/4-20	1	7	Positive or Negative Output Studs
SCREW TERMINAL 1/4-20	1	7	Positive or Negative Output Studs
SCREW TERMINAL 1/4-20	1	7	Positive or Negative Output Studs
SCREW TERMINAL 5/16-18	2	7	Positive or Negative Output Studs
SCREW TERMINAL 5/16-18	2	7	Positive or Negative Output Studs
SCREW TERMINAL 5/16-18	1	7	Positive or Negative Output Studs
SCREW, TAP #6-32X11/32	4	8	Hold regulator sense leads and capacitor to rectifier rings
SCREW #10-32 X 1 1/2	2	9	Holds rectifier ring to rear housing
SCREW, #10 THD FORM	2	9	Holds rectifier ring to rear housing
WASHER, LOCK #10	5	10	Lock washer for bolt (Key 9)
WASHER, FLAT #10	2	11	Flat washer for bolt (Key 9)
WASHER INSULATING	2	12	Insulates bolt (Key 9) from rectifier rings
BUSHING, INSULATING	2	13	Insulates bolt (Key 9) from rectifier rings
BUSHING, INSULATING	2	14	Insulates output studs and rectifier rings from rear housing
BUSHING, INSULATING	1	14	Insulates output studs and rectifier rings from rear housing
BUSHING, INSULATING	2	15	Insulates rectifier ring from rear housing
NUT, CON LOCK, 5/16-18	2	16	Holds positive and negative studs into rear housing
NUT, CON LOCK, 1/4-20	2	16	Holds positive and negative studs into rear housing
WASHER GUARD, 5/16	1	17	Washer used on negative output stud
WASHER GUARD, 1/4	1	17	Washer used on negative output stud
WASHER, LOCK 5/16	2	18	Lock washer for positive and negative output stud
WASHER, LOCK 1/4	2	18	Lock washer for positive and negative output stud
HEX NUT, 5/16-18 UNC	1	19	Jam nut used on negative output stud
HEX NUT, 1/4-20 UNC	3	19	Nut used on positive or negative studs
HEX NUT, 5/16-18 UNC	2	20	Nut used to attach customer cables to alternator output studs

Important: The information contained in this bulletin is intended for use by trained, professional technicians who have the proper tools, equipment, and training to perform the required maintenance described above. This information is NOT intended for 'do-it-yourselfers'; and you should not assume that this information applies to your equipment. If you have any questions regarding this information please visit our website at www.prestolite.com, or contact our technical service department at:

Date: JULY 7, 2017

Bulletin No: TSB-3009

Description	Qty.	Key	Where used
NUT, #10-32 FLANGE LOCK	3	21	Thru Bolts nuts
SCREW #8-32 X 3/8	4	22	Regulator attachment screws
SCREW #8-32 X 7/16	4	22	Regulator attachment screws
HEX NUT, #10-32 UNF	7	23	AC Tap Nuts/ REGULATOR HARDWARE
STUD TERMINAL	3	24	AC Studs
SCREW, #10-32 X 5/8, SQ HD	2	25	Ignition stud/ REMOTE SENCE STUD
SCREW R PIN	1	26	AC TERMINAL

Important: The information contained in this bulletin is intended for use by trained, professional technicians who have the proper tools, equipment, and training to perform the required maintenance described above. This information is NOT intended for 'do-it-yourselfers'; and you should not assume that this information applies to your equipment. If you have any questions regarding this information please visit our website at www.prestolite.com, or contact our technical service department at: